

Plants and Your Cat

Plants add the needed finishing touches to any decor. But, if you have a feline, that beautiful plant could become a deadly enemy. Listed here are plants poisonous to cats that must be avoided if there are cats in your home.

Note that lilies(*), in particular, are dangerous to cats. While in some cases, just parts of a plant (bark, leaves, seeds, berries, roots, tubers, spouts, green shells) might be poisonous, this list rules out the whole plant. Lilies come in many different colors and shapes!

If your cat eats part of a poisonous plant, rush the cat to your veterinarian as soon as possible. If you can, take the plant with you for ease of identification. Courtesy of the CFA (Cat Fancier's Association).

Plants Poisonous to Cats:

Almond (Pits of)	Eggplant	Morning Glory
Aloe Vera	Elaine	Mother-in Law's Tongue
Alocasia	Elderberry	Morning Glory
Amaryllis	Elephant Ear	Mountain Laurel
Apple (seeds)	Emerald Feather	Mushrooms
Apple Leaf Croton	English Ivy	Narcissus
Apricot (Pits of)	Eucalyptus	Needlepoint Ivy
Arrowgrass	Euonymus	Nephytis
Asparagus Fern	Evergreen Ferns	Nightshade Oleander
Autumn Crocus	Fiddle-leaf fig	Onion
Avacado (fruit and pit)	Florida Beauty	Oriental Lily *
Azalea Baby's Breath	Flax	Peace Lily
Baneberry	Four O'Clock	Peach (pits and wilting leaves)
Bayonet	Foxglove	Pencil Cactus
Beargrass	Fruit Salad Plant	Peony
Beech	Geranium	Periwinkle
Belladonna	German Ivy	Philodendron
Bird of Paradise	Giant Dumb Cane	Pimpernel
Bittersweet	Glacier Ivy	Plumosa Fern
Black-eyed Susan	Golden Chain	Poinciana
Black Locust	Gold Dieffenbachia	Poinsettia (low toxicity)
Bleeding Heart	Gold Dust Dracaena	Poison Hemlock
Bloodroot	Golden Glow	Poison Ivy
Bluebonnet	Golden Pothos	Poison Oak
Box	Gopher Purge	Pokeweed
Boxwood	Hahn's Self-Branching Ivy	Poppy
Branching Ivy	Heartland Philodendron	Potato
Buckeyes	Hellebore	Pothos
Buddist Pine	Hemlock, Poison	Precatory Bean
Burning Bush	Hemlock, Water	Primrose
Buttercup Cactus	Henbane	Privet, Common
Candelabra	Holly	Red Emerald
Caladium	Horsebeans	Red Princess
Calla Lily	Horsebrush	Red-Margined Dracaena
Castor Bean	Hellebore	

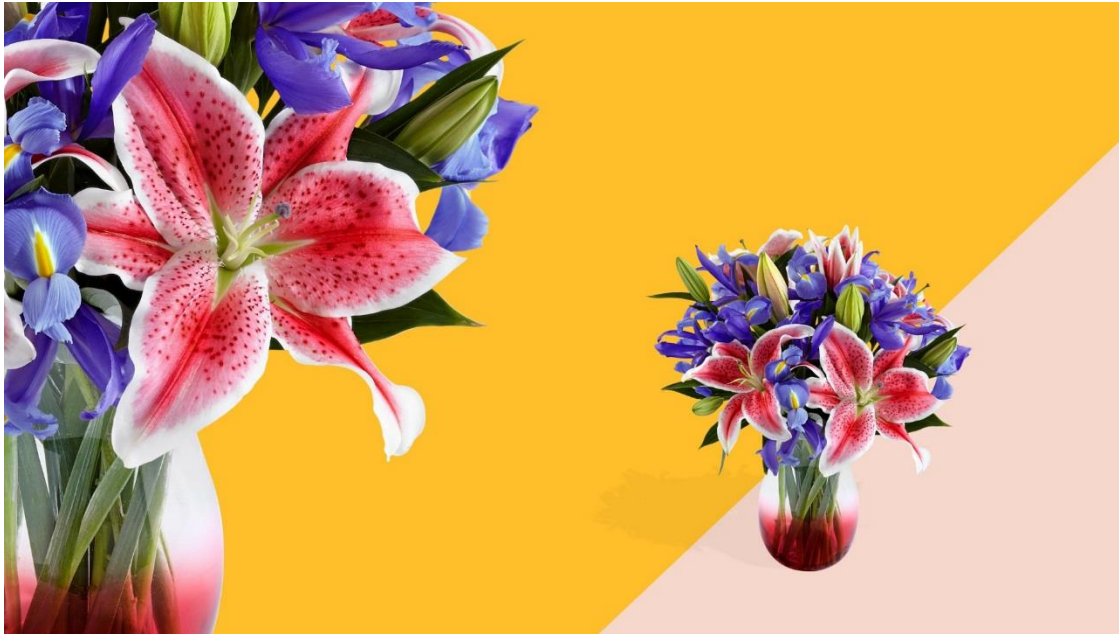
Ceriman
Charming Dieffenbachia
Cherry (pits, seeds & wilting leaves)
Cherry, most wild varieties
Cherry, ground
Cherry, Laurel
Chinaberry
Chinese Evergreen
Christmas Rose
Chrysanthemum
Cineria
Clematis
Cordatum
Coriaria
Cornflower
Corn Plant
Cornstalk Plant
Croton
Corydalis
Crocus, Autumn
Crown of Thorns
Cuban Laurel
Cutleaf Philodendron
Cycads
Cyclamen
Daffodil
Daphne
Datura
Deadly Nightshade
Death Camas
Devil's Ivy
Delphinium
Decentrea
Dieffenbachia
Dracaena Palm
Dragon Tree
Dumb Cane
Easter Lily *

Horse Chestnuts
Hurricane Plant
Hyacinth
Hydrangea
Indian Rubber Plant
Indian Tobacco
Iris
Iris Ivy
Jack in the Pulpit
Janet Craig Dracaena
Japanese Show Lily *
Java Beans
Jessamine
Jerusalem Cherry
Jimson Weed
Jonquil
Jungle Trumpets
Kalanchoe
Lacy Tree Philodendron
Lantana
Larkspur
Laurel
Lily
Lily Spider
Lily of the Valley
Locoweed
Lupine
Madagascar Dragon Tree
Marble Queen
Marigold
Marijuana
Mescal Bean
Mexican Breadfruit
Miniature Croton
Mistletoe
Mock Orange
Monkshood
Moonseed

Rhododendron
Rhubarb
Ribbon Plant
Rosemary Pea
Rubber Plant
Saddle Leaf Philodendron
Sago Palm
Satin Pothos
Schefflera
Scotch Broom
Silver Pothos
Skunk Cabbage
Snowdrops
Snow on the Mountain
Spotted Dumb Cane
Staggerweed
Star of Bethlehem
String of Pearls
Striped Dracaena
Sweetheart Ivy
Sweetpea
Swiss Cheese plant
Tansy Mustard
Taro Vine
Tiger Lily *
Tobacco
Tomato Plant (green fruit, stem and leaves)
Tree Philodendron
Tropic Snow Dieffenbachia
Tulip
Tung Tree
Virginia Creeper
Water Hemlock
Weeping Fig
Wild Call
Wisteria Yews (e.g. Japanese Yew)
English Yew
Western Yew
American Yew

Photos of Some Common Lilies

Stargazer Lily: Clinical Signs: Vomiting, loss of appetite, lethargy, kidney failure and death is possible. Cats are only species known to be affected.



Summer Lily:



Calla Lily: Clinical Signs: Oral irritation, intense burning and irritation of mouth, tongue and lips, excessive drooling, vomiting, difficulty swallowing



Peruvian Lily (also called Alstromeria): Clinical signs: diarrhea, mouth irritation, vomiting, salivation and digestive irritation.



Easter Lily: Clinical Signs: Vomiting, inappetence, lethargy, kidney failure, and death is possible. Cats are only species known to be affected.

